



DPX

DIN 24550 FILTER ELEMENTS

DESCRIPTION

DPX DIN 24550 filter elements for pressure applications

MATERIALS

End ring: Steel
End cap: Steel
Seals: NBR Nitrile (FKM Fluoroelastomer on request)

PRESSURE

Collapse, differential for the filter element:
standard series 2,1 MPa (21 bar)
H+ series for high pressure applications 21 MPa (210 bar)

WORKING TEMPERATURE

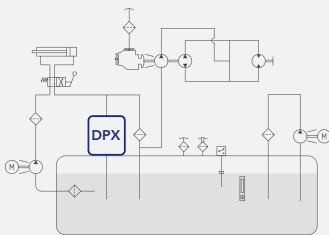
From -25° to +110° C with NBR Nitrile seals
(From -20° to + 140° C with FKM Fluoroelastomer seals)

COMPATIBILITY (ISO 2943)

Full with fluids: HH-HL-HM-HV-HTG
(according to ISO 6743/4)
For fluids different than the above mentioned, please contact our Customer Service.



HYDRAULIC DIAGRAM



Is this datasheet the latest release? Please check on our website

DPX

DIN 24550 FILTER ELEMENTS

ORDERING AND OPTION CHART

D	P	X	FILTER ELEMENT FAMILY								
			SIZE AND LENGTH	0040	0063	0100	0160	0250	0400	0630	1000
			SEALS								
			N = NBR Nitrile	N	N	N	N	N	N	N	N
			F = FKM Fluoroelastomer on request	F	F	F	F	F	F	F	F
			FormulaUFI MEDIA								
			FA = FormulaUFI.MICRON 5 µm(c) β>1.000 Δp 2,1 MPa (21 bar)	FA	FA	FA	FA	FA	FA	FA	FA
			FB = FormulaUFI.MICRON 7 µm(c) β>1.000 Δp 2,1 MPa (21 bar)	FB	FB	FB	FB	FB	FB	FB	FB
			FC = FormulaUFI.MICRON 12 µm(c) β>1.000 Δp 2,1 MPa (21 bar)	FC	FC	FC	FC	FC	FC	FC	FC
			FS = FormulaUFI.MICRON 16 µm(c) β>1.000 Δp 2,1 MPa (21 bar)	FS	FS	FS	FS	FS	FS	FS	FS
			FD = FormulaUFI.MICRON 21 µm(c) β>1.000 Δp 2,1 MPa (21 bar)	FD	FD	FD	FD	FD	FD	FD	FD
			FE = FormulaUFI.MICRON 30 µm(c) β>1.000 Δp 2,1 MPa (21 bar)	FE	FE	FE	FE	FE	FE	FE	FE
			HA = FormulaUFI.MICRON 5 µm(c) β>1.000 Δp 21 MPa (210 bar)	HA	HA	HA	HA	HA	HA	HA	HA
			HB = FormulaUFI.MICRON 7 µm(c) β>1.000 Δp 21 MPa (210 bar)	HB	HB	HB	HB	HB	HB	HB	HB
			HC = FormulaUFI.MICRON 12 µm(c) β>1.000 Δp 21 MPa (210 bar)	HC	HC	HC	HC	HC	HC	HC	HC
			HS = FormulaUFI.MICRON 16 µm(c) β>1.000 Δp 21 MPa (210 bar)	HS	HS	HS	HS	HS	HS	HS	HS
			HD = FormulaUFI.MICRON 21 µm(c) β>1.000 Δp 21 MPa (210 bar)	HD	HD	HD	HD	HD	HD	HD	HD
			HE = FormulaUFI.MICRON 30 µm(c) β>1.000 Δp 21 MPa (210 bar)	HE	HE	HE	HE	HE	HE	HE	HE
			CC = FormulaUFI.CELL 10 µm β>2	CC	CC	CC	CC	CC	CC	CC	CC
			CD = FormulaUFI.CELL 25 µm β>2	CD	CD	CD	CD	CD	CD	CD	CD
			MD = FormulaUFI.WEB 30 µm	MD	MD	MD	MD	MD	MD	MD	MD
			ME = FormulaUFI.WEB 60 µm	ME	ME	ME	ME	ME	ME	ME	ME
			MF = FormulaUFI.WEB 90 µm	MF	MF	MF	MF	MF	MF	MF	MF
			MG = FormulaUFI.WEB 250 µm	MG	MG	MG	MG	MG	MG	MG	MG

FILTER ELEMENT

	A	B	C	AREA (cm ²)		
				Media F+	Media C+	Media M+
DPX0040	45	22,3	98	496	496	496
DPX0063	45	22,3	158	819	819	819
DPX0100	45	22,3	248	1.310	1.310	1.310
DPX0160	78	40,3	159	2.552	2.552	2.630
DPX0250	78	40,3	249	4.198	4.198	4.198
DPX0400	78	40,3	399	6.810	6.810	6.810
DPX0630	100	60,2	399	8.970	8.970	7.918
DPX1000	100	60,2	629	14.252	14.252	10.060

