



# CSE AIR FILTERS



## DESCRIPTION

Air breather with spin-on element

## MATERIALS

Connector: Zinc plated steel  
Basket: Zinc plated steel  
Spin-on can: Steel  
Spare filter element:  
CC = Impregnated Cellulose  
FD = Fibreglass  
Filtration degree in air 3 µm

## FLOW RATE

Qmax 2800 l/min

## COMPATIBLY

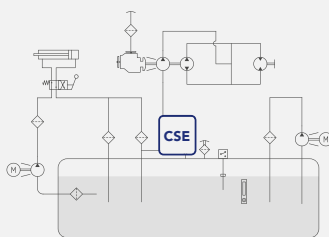
Full with fluids HH - HL - HM - HR - HV - HG (according to ISO 6743/4). For fluids different than the above mentioned, please contact our Customer Service.

## WORKING TEMPERATURE

From -25°C to 110°C



## HYDRAULIC DIAGRAM

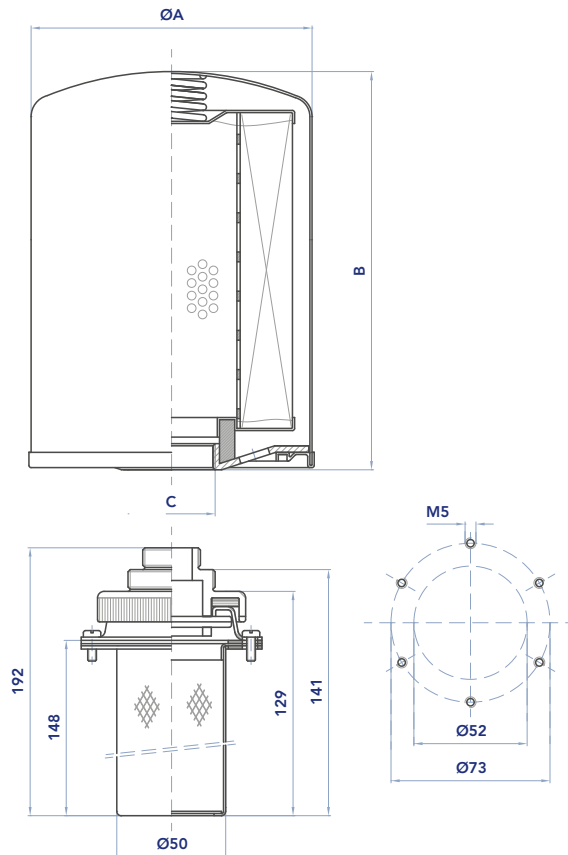


Is this datasheet the latest release? Please check on our website.

### ORDERING AND OPTION CHART

C	S	E	COMPLETE FILTER FAMILY					FILTER ELEMENT FAMILY	A	S	E
			SIZE & LENGHT	11	12	21	22	SIZE & LENGTH			
			CONNECTION TYPE								
			S = standard flange	S	S	S	S				
			W PRESSURIZATION VALVE								
			W = without	W	W	W	W				
			SEALS					SEALS		X	
			C = sugheroil (flange type)	C	C	C	C				
			FILTER MEDIA					FILTER MEDIA			
			FD = fibreglass	FD	FD	FD	FD				
			CC = impregnated cellulose	CC	CC	CC	CC				

### INSTALLATION DRAWING



### DIMENSIONS

	flow rate (l/min)	A	B	C
CSE11SWC	1.800	96	146	3/4" BSP
CSE12SWC	1.800	96	191	3/4" BSP
CSE21SWC	2.800	129	181	1 1/4" BSP
CSE22SWC	2.800	129	226	1 1/4" BSP