



CBC
AIR FILTERS

DESCRIPTION

Air breather filter, extension tube available on request

MATERIALS

Housing: Plastic

Basket: Plastic

Seal: Nitrile NBR

SPARE FILTER ELEMENT

Impregnated Cellulose 3 μ m
(Filtration degree in air)

FLOW RATE

Qmax 1800 l/min

COMPATIBLY

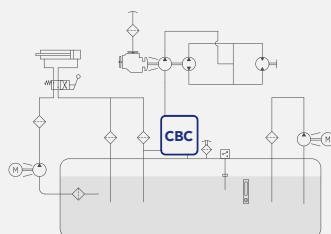
Full with fluids HH-HL-HM-HV-HTG (according to ISO 6743/4).
For fluids different than the above mentioned, please contact
our Customer Service.

WORKING TEMPERATURE

From -25°C to 110°C



HYDRAULIC DIAGRAM

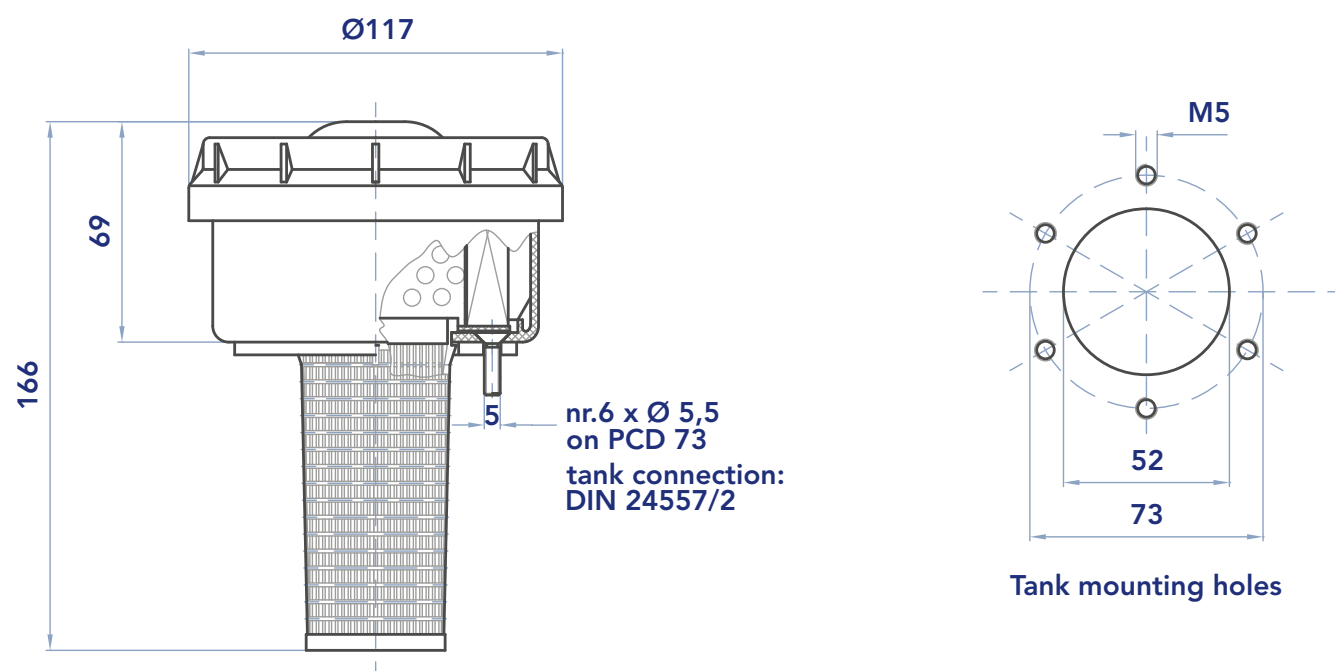


Is this datasheet the latest release? Please check on our website

ORDERING AND OPTION CHART

C	B	C	COMPLETE FILTER FAMILY		FILTER ELEMENT FAMILY	E	B	C	2	1
			SIZE & LENGHT	21	SIZE & LENGTH					
			CONNECTION TYPE							
			S = flange	S						
			PORT SIZE							
			00 = DIN 24557/2	00						
		W	PRESSURIZATION VALVE							
			W = without	W						
		N	SEALS		SEALS	N				
			N = NBR Nitrile	N						
C	C		FILTER MEDIA		FILTER MEDIA	C	C			
			CC = impregnated cellulose 3 µm	CC						
			ACCESSORIES							
			W = without	W						
			A = antisplash	A						

INSTALLATION DRAWING



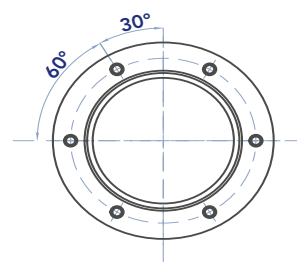
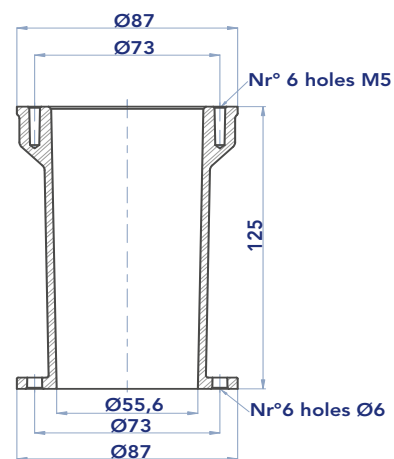
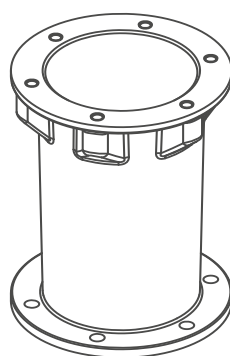
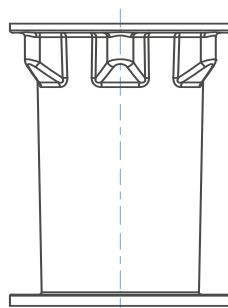
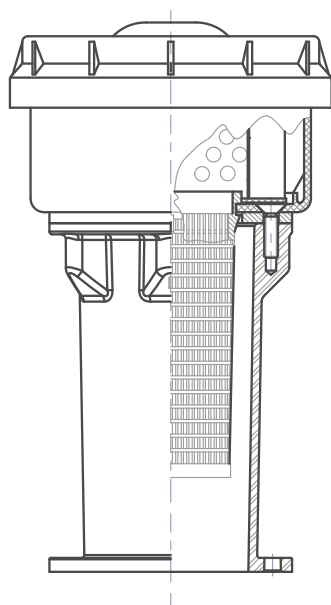
ACCESSORY

CEA20NXX

EXTENSION TUBE FOR FILLER BREATHER

Very helpful to avoid oil leakage from the breather due to oil vapors or tilt in the tank

Fits any filler breather with DIN 24557-2 flange



Both flanges according to DIN 24557-2