

COMPO CARE

Pressure Filters



CLOGGING INDICATOR
A visual or visual-electrical differential indicator is available as an option and allows monitoring of the element conditions, giving an exact indication of the right time to replace the element.

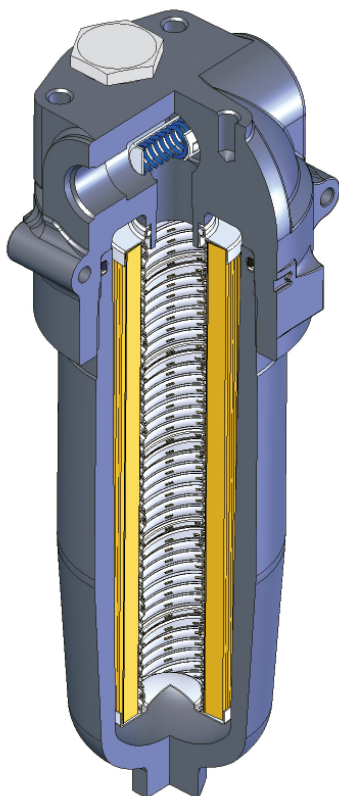


FILTER HOUSING
Head and bowl are made by high performance aluminium alloy ensuring the best fatigue resistance.

FILTER ELEMENT
The filter element is manufactured with filter medias selected in the UFI laboratory and mechanically supported to maintain the highest performance even at high differential pressures.

SEAL GUARANTEED
A perfect O-ring seal is always ensured as it is not dependent on the tightening torque applied to the bowl.

EASY MAINTENANCE
The hexagon end of the bowl allows for easy maintenance by using a simple hexagon wrench.



MATERIALS

Housing:
Anodized aluminium alloy

Bypass valve:
Steel

Seals:
NBR Nitrile
(FKM - on request fluoroelastomer)

Indicator housing:
Brass

PRESSURE (ISO 10771-1:2002)

Max working:
22 MPa (220 bar)

Test:
33 MPa (330 bar)

Bursting:
66 MPa (660 bar)

Collapse, differential
for the filter element (ISO 2941): 2,1 MPa (21 bar)

BYPASS VALVE

Setting:
600 kPa (6 bar) +/-10%

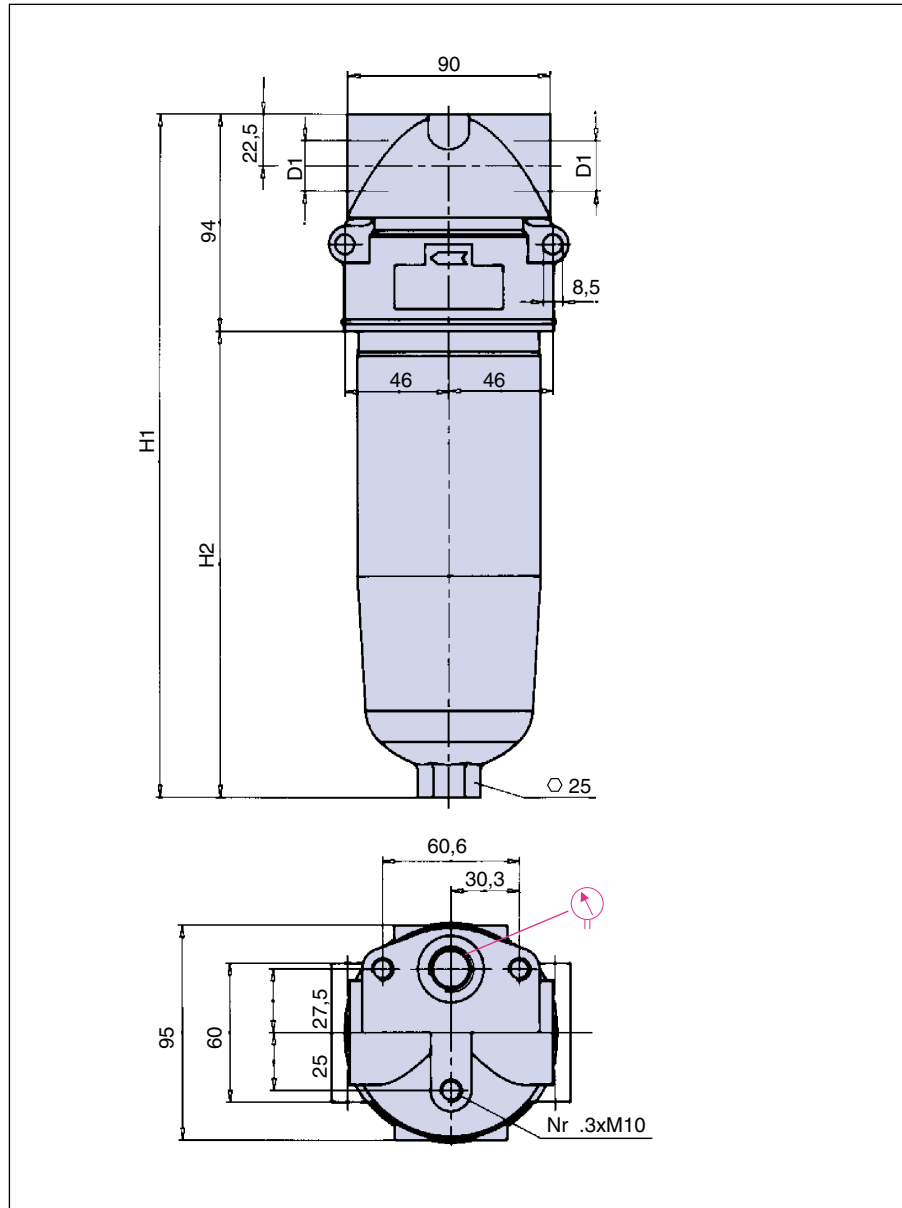
WORKING TEMPERATURE

From -25° to +110° C

COMPATIBILITY (ISO 2943:1999)

Full with fluids: HH-HL-HM-HR-HV-HG
(according to ISO 6743/4)
For fluids different than the above mentioned,
please contact our Sales Department.

INSTALLATION DRAWING



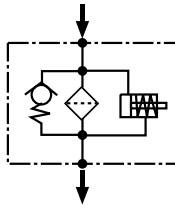
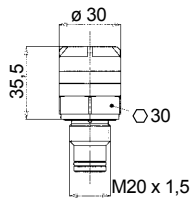
DIMENSIONS AND WEIGHTS

FILTER HOUSING

	D1	H1	H2	kg
FPM21	1/2" - 3/4" - 1"	205	111	1,5
FPM22	1/2" - 3/4" - 1"	298	197	2,0

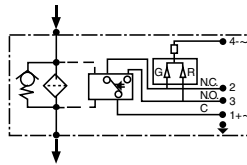
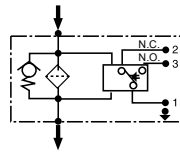
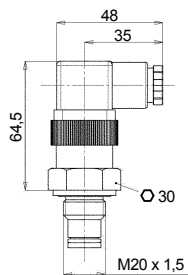
CLOGGING INDICATORS Differential

SERIES 5E



Series 5E:
differential visual indicator
500 kPa (5 bar)

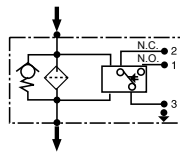
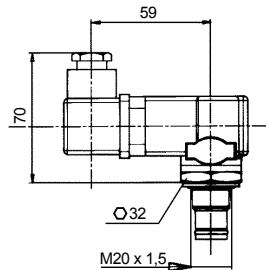
SERIES 6E & SERIES 7E



Series 6E (series 7E with LED - 24V):
differential electrical indicator
500 kPa (5 bar)

Connector according to DIN 43650.
Protection IP65 according to DIN 40050.
SPDT: C.A. 125-250 V
> max resistive or inductive load 1A;
C.C. 14-30 V
> max resistive or inductive load 4-3 A resp.

SERIES T2



Series T2:
differential electrical indicator
with thermostat 30°C,
500 kPa (5 bar)

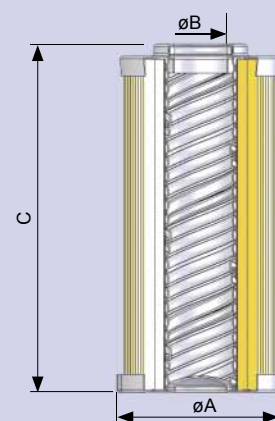
Connector according to DIN 43650.
Protection IP65 according to DIN 40050.
SPDT: C.A. 125-250 V
> max resistive or inductive load 1A;
C.C. 14-30 V
> max resistive or inductive load 4-3 A resp.

SERIES 72 AVAILABLE ONLY ON REQUEST - SEE SUMMING UP OF THE CLOGGING INDICATORS

Recommended tightening torque 90 Nm

FILTER ELEMENT

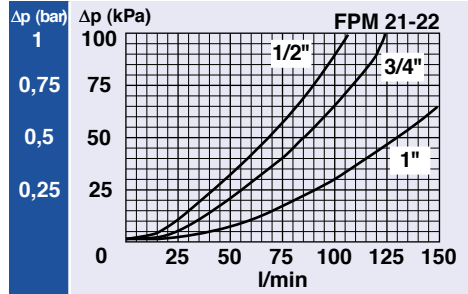
	A	B	C	kg	Area (cm ²)	
					Media F+	Media C+
EPB21	23,5	52	115	0,25	975	780
EPB22	23,5	52	210	0,35	1.830	1.465



PRESSURE DROP CURVES (Δp)

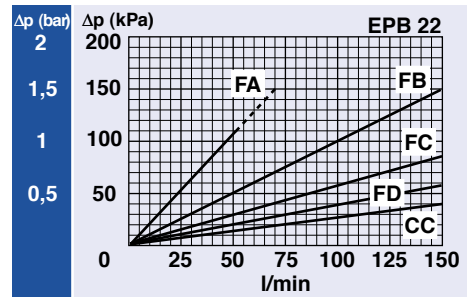
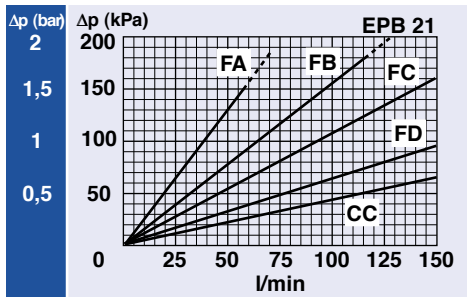
The "Assembly Pressure Drop (Δp)" is obtained by adding the pressure drop values of the Filter Housing and of the Clean Filter Element corresponding to the considered Flow Rate and it must be lower than 120 kPa (1,2 bar).

FILTER HOUSING PRESSURE DROP (mainly depending on the port size)



CLEAN FILTER ELEMENT PRESSURE DROP WITH F+ AND C+ MEDIA

(depending both on the internal diameter of the element and on the filter media)



BYPASS VALVE PRESSURE DROP

When selecting the filter size, these curves must be taken into account if it is foreseen that any flow peak is to be absorbed by the bypass valve, it also must be of proper configuration to avoid pressure peaks. The valve pressure drop is directly proportional to fluid specific gravity.

