

**TRANS CARE**  
 Filters for hydrostatic transmissions

**TA - TB**



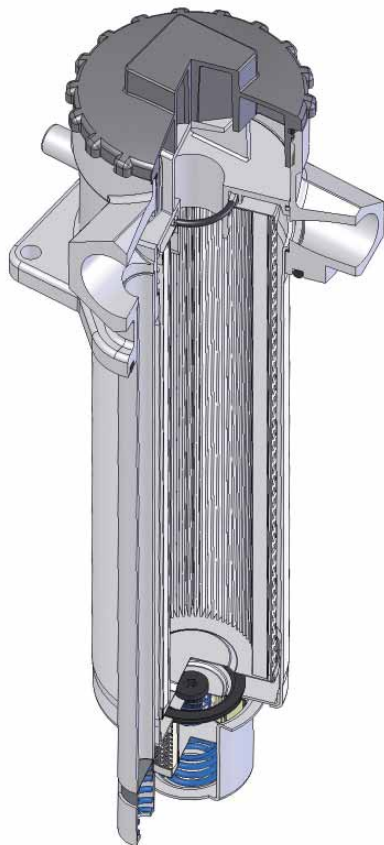
**CLOGGING INDICATOR**

A visual or electrical indicator is available as an option and allows to monitor the element condition. The port for the indicator is a standard feature.



**FILTER ELEMENT**

The filter element is manufactured with filter medias selected in the UFI laboratory and mechanically supported to maintain the highest performance even at high differential pressures.



**QUICK MAINTENANCE**

Thanks to a threaded cap no tool is needed when replacing the element.

**MATERIALS**

Head:  
 Aluminium alloy

Cover:  
 Polyamide TA-TB23  
 Aluminium alloy TA-TB31-32-33

Bowl:  
 Steel

Seals:  
 NBR Nitrile

Indicator housing:  
 Brass

**PRESSURE (ISO 10771-1:2002)**

Max working: 1 MPa (10 bar)

Test: 1,5 MPa (15 bar)

Bursting: 3 MPa (30 bar)

Collapse, differential  
 for the filter element: 1 MPa (10 bar)

**BYPASS VALVE**

Setting: 250 kPa (2,5 bar) +/-10%

**WORKING TEMPERATURE**

From -25° to +110° C

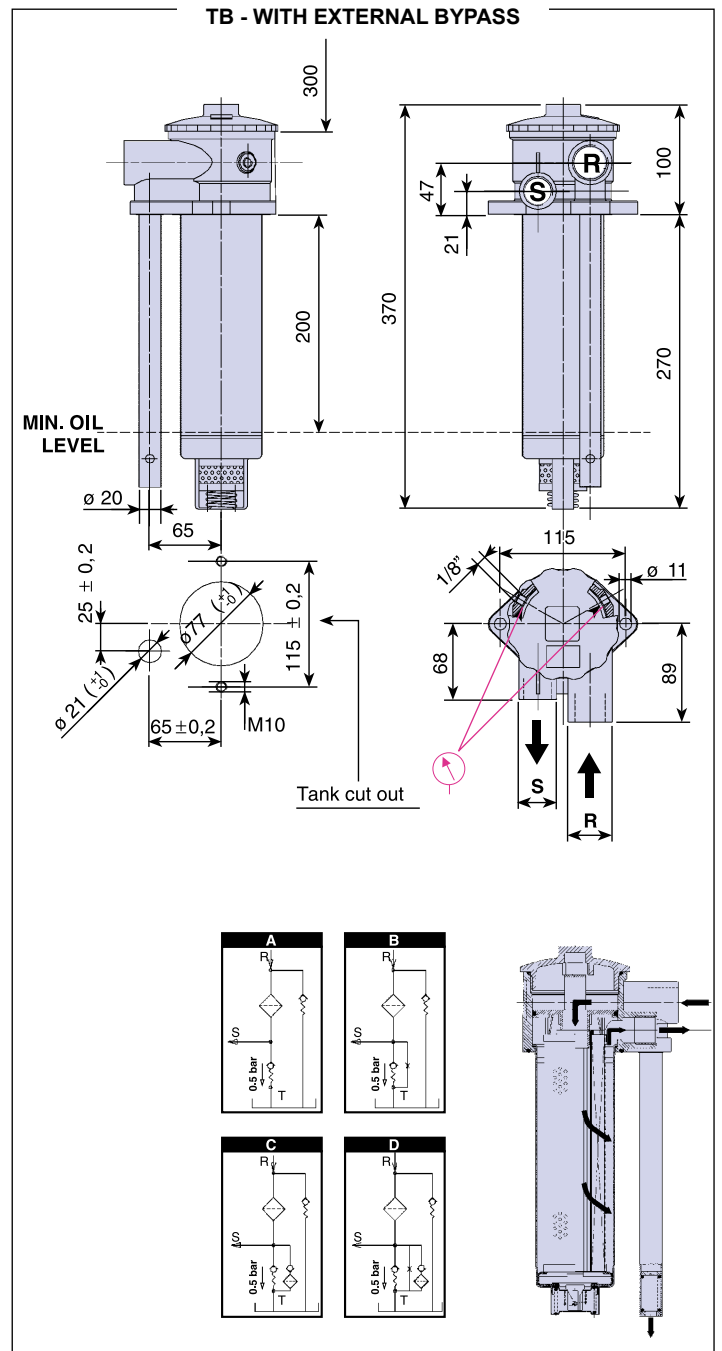
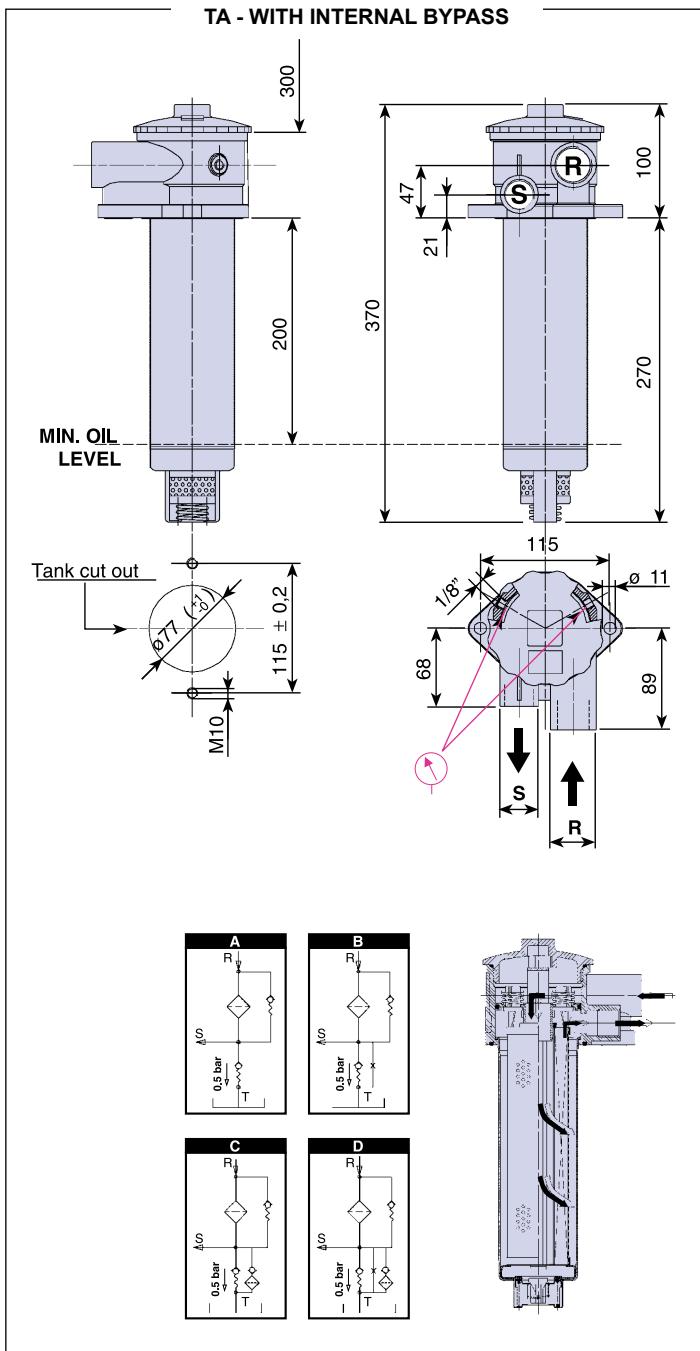
**WEIGHT**

kg. 1,5 TA-TB23  
 kg. 3,5 TA-TB31  
 kg. 4,0 TA-TB32  
 kg. 4,4 TA-TB33

**COMPATIBILITY (ISO 2943:1999)**

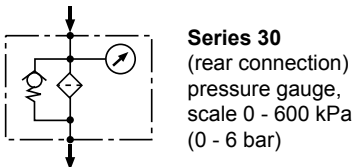
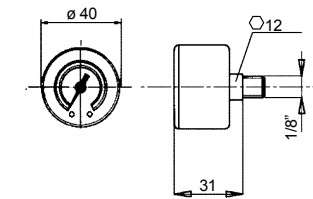
Full with fluids: HH-HL-HM-HR-HV-HG  
 (according to ISO 6743/4)  
 For fluids different than the above mentioned,  
 please contact our Sales Department.

# INSTALLATION DRAWINGS TA-TB 23

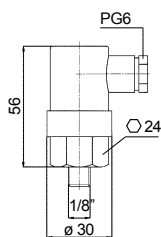


## CLOGGING INDICATORS

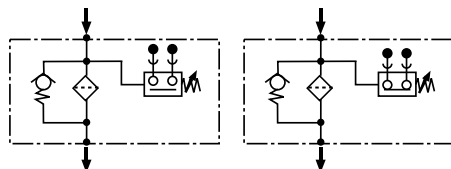
### SERIES 30



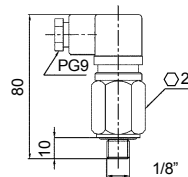
### SERIES 86 & 87



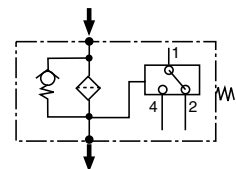
**Series 86 (N.O. contacts)**  
**& series 87 (N.C. contacts):**  
 pressure switch - max voltage  
 220 Vca 50-60 Hz  
 protection IP65  
 max current 0,5A resistive,  
 0,25A inductive  
 switching power 100VA  
 setting 200 kPa (2,0 bar).



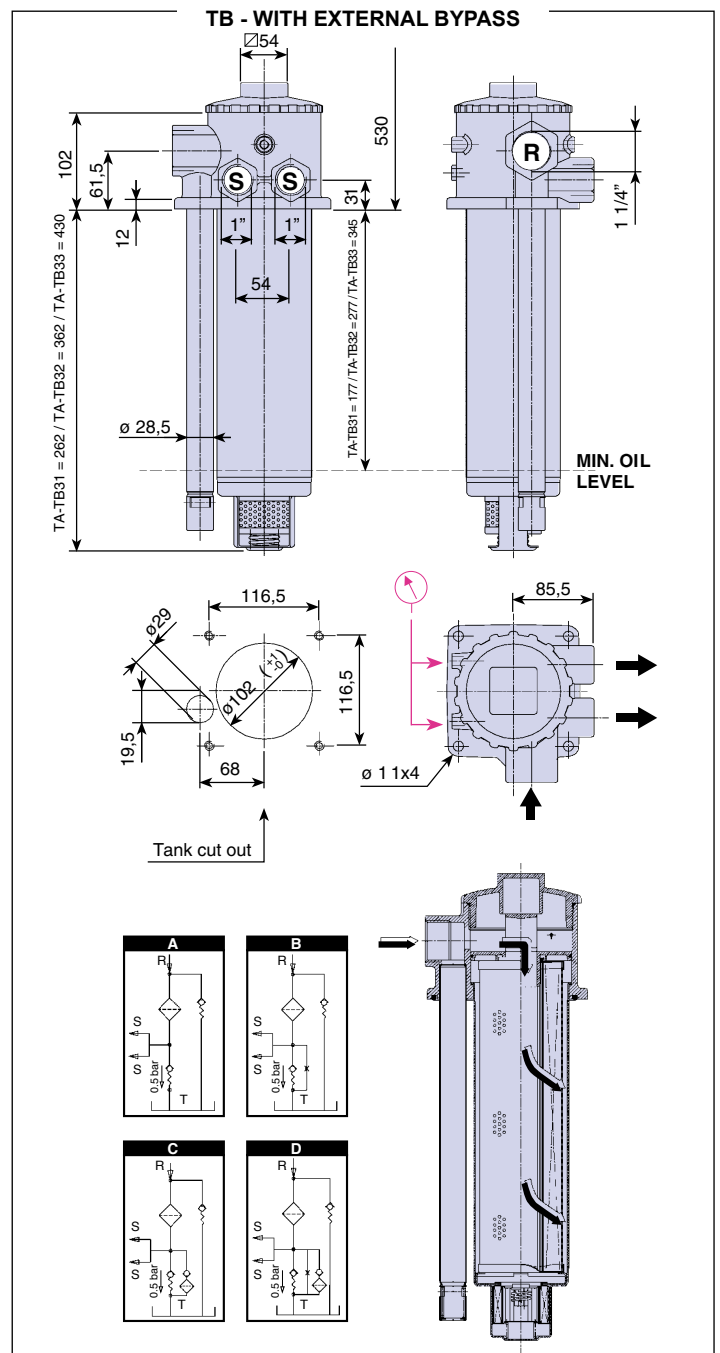
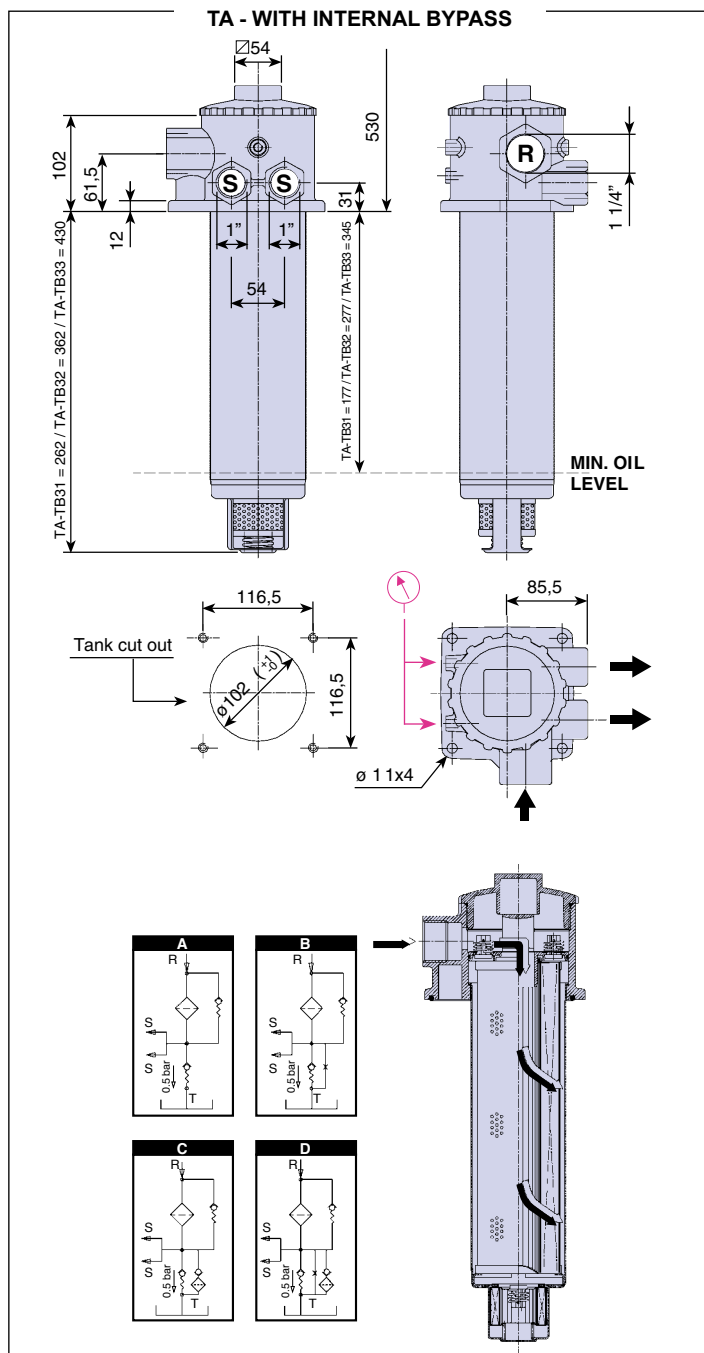
### SERIES P6



**Series P6:**  
 SPDT,  
 pressure switch  
 max voltage 250V - 50Hz  
 max current 6A resistive,  
 1A inductive  
 protection IP65  
 setting 200 kPa (2 bar)



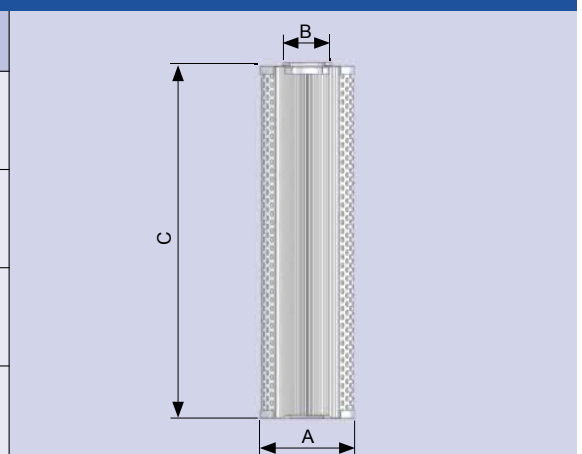
## INSTALLATION DRAWINGS TA-TB 31-32-33



## DIMENSIONS

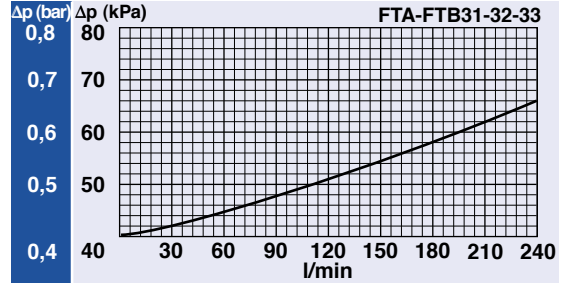
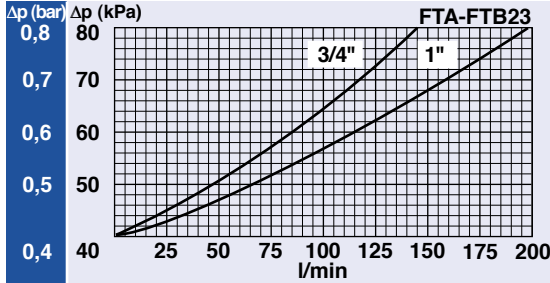
### FILTER ELEMENT

|       | A    | B  | C   | kg   | Area (cm <sup>2</sup> ) |          |
|-------|------|----|-----|------|-------------------------|----------|
|       |      |    |     |      | Media F+                | Media C+ |
| ETA23 | 63,5 | 28 | 230 | 0,40 | 1.900                   | 2.200    |
| ETA31 | 90   | 40 | 232 | 0,55 | 2.800                   | 3.200    |
| ETA32 | 90   | 40 | 333 | 0,77 | 4.100                   | 4.400    |
| ETA33 | 90   | 40 | 400 | 0,85 | 4.900                   | 5.400    |

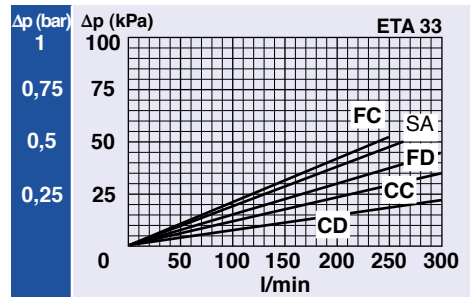
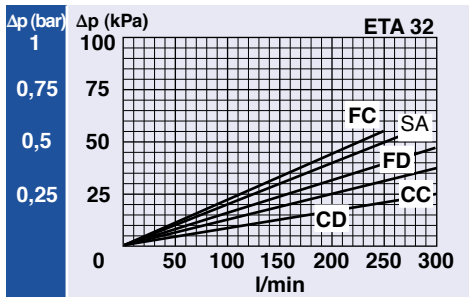
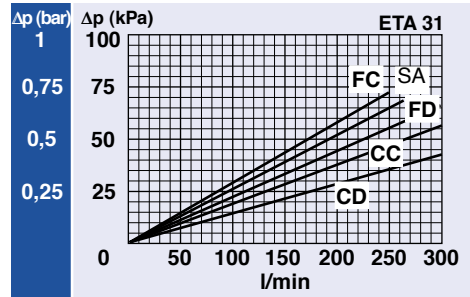
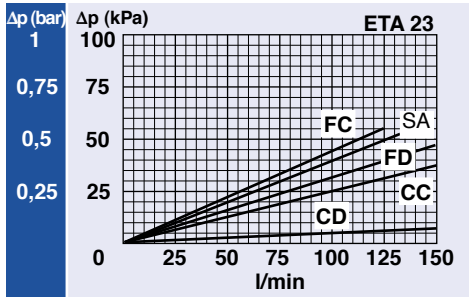


## PRESSURE DROP CURVES ( $\Delta p$ )

### FILTER HOUSING PRESSURE DROP



### CLEAN FILTER ELEMENT PRESSURE DROP



### BYPASS VALVE PRESSURE DROP

